



Customized program developed for:
University of Nevada Las Vegas
Spain
May 2025



What makes us different

WorldStrides is proud to collaborate with our university partners to deliver life-changing global experiences, putting your programs on the cutting edge of today's international education. Our commitment to exposing students to real-world learning arenas reflects our mission to partner with you in preparing the global leaders of tomorrow.



Allies in your learning outcomes

Experiential learning is at the heart of what we do. Our mission is to partner with faculty to create enriching and educational experiences abroad. By incorporating your curriculum goals, we source one-of-a-kind opportunities that better prepare your students for future careers by exposing them to international culture, business, and academic engagements. Our intentional approach to program design produces thoughtful and curated itineraries that complement your curriculum and heighten learning and awareness for your students at every turn. Check out all the [immersive engagements](#) our team has to offer.



Our network is your network

We have the global reach and international relationships to power your program with the best in applied learning. We support more than 110 learning destinations around the globe, with the connections and track record to prove it. With offices in more than 70 cities worldwide and backed by an internal team of over 1,300 professionals, we'll work together with you as a virtual extension of your university to deliver a truly global perspective. From guest lecturers to local professionals and business leaders, our worldwide network continues to grow.



With you every step of the way

From our inception, we have set ourselves apart through our reputation for extraordinary customer care. You'll work with a dedicated in-house expert to support your team through the entire program process, from recruiting and planning to managing and confirming all program logistics. All vendors, including hotels, are strictly vetted for insurance and local regulation compliance. As an added bonus, when traveling, our online itinerary platform (WorldStrides App) allows you to stay connected during the planning process and contains all the important travel details you need while traveling.



Ensuring your safety

From a dedicated crisis management team to our partnership with ExLog – our capacity for emergency support and contingency options is unmatched. We are relentlessly focused on emergency preparedness so that your groups can travel with absolute confidence, and should something arise, we have 24/7 emergency support and phone access to a U.S. based physician for consultation. What's more, students and traveling leaders will have embedded insurance that covers a wide range of health and safety risks, with special coverage for medical-related cancellation, mental health, and even security or medical evacuation.



In an industry becoming increasingly transactional in nature, WorldStrides has remained a true partner. Their custom program team provides much more than logistics support and is always happy, indeed eager, to engage in more meaningful conversations with education abroad professionals and faculty leaders about program goals, learning objectives and ways to weave those into the design of the custom program. Many organizations claim to do this. Far fewer deliver. WorldStrides does.

Noah Rost, Arizona State University





OFFICIAL NAME: Kingdom of Spain

CAPITAL: Madrid

TOP LANGUAGES:
Spanish, Basque, Catalan, Galician

MAJOR INDUSTRIES:
Tourism, automobiles, agriculture, energy, textiles, food and beverages, metals, chemicals

SPOTLIGHT ON SPAIN

Spain attracts visitors with a passion for life that is contagious. This spirit manifests itself today through the brilliant architecture, the pounding rhythms of flamenco, and the allure of an afternoon siesta. While life hasn't always been easy in Spain, it has emerged from crises both ancient and modern. In the 16th and 17th centuries, the Spanish Empire ruled over broad regions of Europe and the New World, thriving under the rule of the Hapsburgs during a period known as the Golden Age. When this power waned, Spain entered a darker period, mired in turmoil, civil war, and the dictatorship of Francisco Franco. It wasn't until Franco's death in 1975 that Spain truly joined the modern international community.

Spain continues to have positive economic growth following a prolonged recession stemming from the 2008 global financial crisis. Economic activity surpassed its pre-crisis peak in 2017 largely due to increased private consumption. Favorable financial conditions and strong job creation continue to support the private domestic demand, though unemployment remains high. Strong export growth, driven by increasing labor productivity and an internal devaluation, was significant in bringing Spain's current account into surplus and increased interest from foreign investors. The European Commission criticized Spain's 2016 budget for easing austerity measures and for its alleged overly optimistic growth and deficit projections. Recent projections anticipate the economy to grow and the continuation of job creation.



TOPICS TO EXPLORE

LITERATURE – Explore Spain's literary master: walk in the footsteps of Cervantes, Miguel de Unamuno, Federico Garcia Lorca, and even Ernest Hemingway, visiting sites that inspired their characters.

ART & ARCHITECTURE – From museums to street murals, the art of Spain is deeply ingrained in culture. Visit works of Goya, Velasquez, and other masters in the Prado. Learn about Picasso's life and work. Wander the sites designed by Antonin Gaudí in Barcelona. Trek through Toledo, Salamanca, or the southern regions where Islamic influence is strong.

WINE & CUISINE – Food and wine are central to the Spanish way of life. The Spanish style of small plate or "tapas" is well known, but there is much more to experience and taste at a late dinner in Spain! Taste your way through regions of Spanish cuisine and study the techniques, tools, history, and business of eating and drinking.

BY THE NUMBERS

1.76 TRILLION | EST 2017
GDP (USD PPP)

48.9 MILLION | POPULATION

505,370 KM² | TOTAL AREA

130 CONNECTIONS

2,300 MEETINGS PLANNED
IN THE REGION

Your customized itinerary

Travel, Tourism, Gastronomy & Wine

The following itinerary is a working document and is subject to change (revised 10/7/2024).

May 19,2025 Program Begins	
Monday	<ul style="list-style-type: none"> Flight departs for Madrid – <i>Arranged by participants.</i>
May 20 Madrid	
Tuesday Meals Included Dinner Madrid Accommodations 3* Hotel (1 of 5)	<p><i>Welcome to Madrid! This European political, economic, and cultural center draws visitors in with a passion for life that is contagious. Whether it's the brilliant art, pounding rhythms of flamenco, or the pace of modern business at one of its many headquarters, Madrid has an energy that is not just Spanish, but uniquely Madrileño.</i></p> <ul style="list-style-type: none"> At the most common arrival time of all participants, transfer to your accommodations – <i>Local staff and private transportation included.</i> Check-in to your accommodations or store luggage if check-in is unavailable. Receive Madrid Metro Pass (Valid 5 days) In the evening, taste the local cuisine with a group Welcome Dinner – <i>Local staff and public transportation included.</i>
May 21 Madrid	
Wednesday Meals Included Breakfast Lunch Madrid Accommodations 3* Hotel (2 of 5)	<ul style="list-style-type: none"> Make your way to today's engagements – <i>Full day local staff and public transportation included.</i> <p>Welcome Orientation (Local Staff-Led) Including Health & Safety and a walking tour of the area, nearby shops and grocery stores; and how to use public transit. <i>No formal meeting space included. (No fees applicable),</i></p> <ul style="list-style-type: none"> Continue to next visit. <p>Madrid City Tour (Guided) During your stay in Madrid, you will expand your knowledge of Spanish history, culture, and politics. Let's begin the trip with a walking tour of Habsburg Madrid, known to Spaniards as Madrid de los Austrias, and which includes the Puerta del Sol, the Royal Palace, Plaza de Oriente, Plaza de la Villa, Plaza Mayor, and some of the city's oldest streets. You will see the Madrid Royal Palace and more! (No applicable entrances – sightseeing tour).</p> <ul style="list-style-type: none"> <i>Group lunch included at a nearby restaurant.</i> Enjoy the remainder of the day free with dinner on own.
May 22 Madrid	
Thursday Meals Included Breakfast Madrid Accommodations 3* Hotel (3 of 5)	<p>Free Day or University Sourced Activity Enjoy a free day with lunch and dinner on your own. <i>No entrances or classroom space included.</i></p>

May 23 | Madrid

Friday

Meals Included
Breakfast

Madrid Accommodations
3* Hotel (4 of 5)

Make your way to today's engagements – *Make your way on foot to class this morning. No local staff.*

Class Meeting

Content sourced by faculty. No formal meeting space included.

- Break for lunch on own.
- Meet local staff in hotel lobby.
- Continue to next visit. – *Local staff and private transportation included.*

Vineyard & Wine Tasting (Guided)

Specific vineyard pending. (Fees and tastings included).

- Return to Madrid.
- Enjoy the remainder of the day free with dinner on own.

May 24 | Madrid

Saturday

Meals Included
Breakfast

Madrid Accommodations
3* Hotel (5 of 5)

- Make your way to today's engagements – *Half day local staff and public transportation included.*

Madrid Royal Palace (Guided)

The Royal Palace of Madrid has served as the official residence of the Spanish Royal Family and now used for state ceremonies. The palace is the largest palace in Europe with 135,000 square meters (1,450,000 sq ft) of floorspace and it contains 3,418 rooms! Your guided tour begins in the Plaza separating the neo-Classical Palacio Real and the Catedral de Santa María Real de la Almudena. Next, we proceed to visit the many ornate and dazzling rooms and halls that comprise the palace. During your tour, you may get a glimpse paintings by artists such as Velázquez and Francisco de Goya or see the world's only complete Stradivarius string quartet known as The Royal Quartet. (Entrance included)

** Please note: the palace is still used for official acts by the Royal Family and may cancel visits and tours at any time, even if visits are confirmed)*

- Enjoy the remainder of the day free with lunch and dinner on your own.

May 25 | Madrid to Valencia

Sunday

Meals Included
Breakfast

Valencia Accommodations
3* Hotel (1 of 4)

- Check out of your hotel and make your way to the train station. – *Local staff will assist with train tickets but will not travel with group. Public transit to train station included.*

Train to Valencia – Approximately 2 hours. Quote only

- Upon arrival – make your way to the hotel for check in. – *Local staff and public transportation included.*
- Receive Valencia Public Transit Pass (Valid for 10 one-way trips)
- Check in or drop off your luggage.
- Lunch on your own before class time.

Class Meeting

Content sourced by faculty. No formal meeting space included.

- Enjoy the remainder of the day free with dinner on own.

May 26 | Valencia

Monday

Meals Included
Breakfast

Valencia Accommodations
3* Hotel (2 of 4)

- Make your way to today’s engagements – *Make your way on foot to class. No local staff included.*

Class Meeting

Content sourced by faculty. No formal meeting space included.

- Break for lunch on own.
- Continue to next visit. – Local staff and public transportation included.

Valencia City Tour (Guided)

Explore the Old Quarter or Ciutat vella of Valencia starting from the ancient Serrano Towers gate. Walk the narrow streets to see monuments such the Valencia Cathedral, the Plaza de la Virgen, the Miguelete Tower, the Lonja or Silk Exchange Market, the Episcopal Palace, the town hall, Plaza Redonda, and the Mercado Central (Central Food Market). (Entrances to Miguelette Tower and Cathedral included)

- Enjoy the remainder of the day free with dinner on own.

May 27 | Valencia

Tuesday

Meals Included
Breakfast
Lunch (Cooking Class)

Valencia Accommodations
3* Hotel (3 of 4)

- Make your way to today’s engagements – *Half day local staff and private transportation included.*

Paella Cooking Class (Local Chef-Led)

Students will head over to a famous farm-to-table restaurant in the hill country, Barraca de Toni Montoliu. Students will help Toni himself harvest the fresh ingredients needed to make a traditional Paella Valenciana and enjoy the fruits of their labor by sitting down to a group lunch. (transportation, activity and entrances included)

- Return to Valencia.
- Enjoy the remainder of the day free with dinner on own.

May 28 | Valencia

Wednesday

Meals Included
Breakfast

Valencia Accommodations
3* Hotel (4 of 4)

Free Day or University Sourced Activity

Enjoy a free day with lunch and dinner on your own. *No entrances or classroom space included.*

May 29 | Valencia to Barcelona

Thursday

Meals Included
Breakfast

Barcelona Accommodations
3* Hotel (1 of 5)

- Check out of your hotel and depart for your next destination – *Full day local staff and private transportation included.*

Coach to Barcelona – *Approximately 3 hours (plus time for tour stops)*

Cheese & Wine Tour

Specific location and tour details pending. To be sourced by university. (No fees included).

- Continue onwards to Barcelona.
- Check into your hotel or store luggage if unavailable.
- Enjoy the remainder of the day free with dinner on own.

May 30 | Barcelona

Friday

Meals Included
Breakfast

Barcelona Accommodations
3* Hotel (2 of 5)

- Make your way to today’s engagements – *Make your way on foot to class. No local staff.*

Class Meeting

Content sourced by faculty. No formal meeting space included.

- Break for lunch on own.
- Continue to next visit. – *Local staff and public transportation included.*
- Receive Barcelona Metro Pass (Valid for 7 days).

Barcelona Gothic Quarter Tour (Guided)

Get oriented with your surroundings as you take a tour of the fascinating Barri Gòtic (Gothic Quarter). On your tour, you will learn about Barcino (ancient Roman settlement founded in the first century B.C.), Ciutat Vella (Old City), and its evolution into today’s cosmopolitan hub. Walk through Barcelona’s cozy streets and lively plazas. (No entrances required)

- Continue to next visit.

La Sagrada Família (Guided)

Visit Antoni Gaudí’s infamous architectural masterpiece, La Sagrada Família (The Sacred Family), which is a well-known symbol of Barcelona. Take a guided tour of La Sagrada Família and admire the detailed interior and exterior design of this still unfinished church. (Entry included)

- Enjoy the remainder of the day free with dinner on own.

May 31 | Barcelona

Saturday

Meals Included
Breakfast

Barcelona Accommodations
3* Hotel (3 of 5)

- Make your way to today’s engagements – *Full day local staff and private transportation included.*

Penedes Wine Region

Specific location and tour details pending. To be sourced by university. (No fees included).

- Return to Barcelona in the afternoon.
- Enjoy the remainder of the day free with dinner on own.

June 1 | Barcelona

Sunday

Meals Included
Breakfast
Tastings

Barcelona Accommodations
3* Hotel (4 of 5)

- Make your way to today’s engagements – *Make your way on foot to class. No local staff.*

Class Meeting

Content sourced by faculty. No formal meeting space included.

- Continue to next visit. – *Meet local staff in the lobby and continue via public transportation.*

La Boqueria Market (Guided)

Enjoy a guided tour of the La Boqueria market and learn about the importance of food in the Spanish culture and lifestyle. (Tastings included). *Due to the size of the market, groups larger than 10 will be split up.

- Enjoy the remainder of the day free with dinner on own.

June 2 | Barcelona

Monday

Meals Included

Breakfast

Dinner

Barcelona Accommodations

3* Hotel (5 of 5)

- Make your way to today's engagements – *Make your way on foot to class. No local staff.*

Class Meeting

Content sourced by faculty. No meeting space included.

- Break for lunch on own and free time.
- In the evening, reflect on your experience with a group **Farwell Dinner** – *Local staff and public transportation included.*

June 3 | Program Ends

Tuesday

Meals Included

Breakfast

- Check out of your accommodations.
- At the most common departure time of all participants, transfer to the airport – *Private transportation included.*
- Flights return home – *Arranged by participants.*

INTEGRATED RISK MANAGEMENT

Each program is backed by unparalleled risk management and logistical support to deliver true peace of mind. We've spent years building the infrastructure and partnerships to deliver safety and reliability for your traveling groups that exceed your university standards.

Risk Mitigation

- Comprehensive vendor vetting, including adherence to local laws
- Contingency destinations & re-routing in event of an emergency
- Partnerships with global risk advisory organizations such as ExLog
- Pre-departure safety orientations conducted for all programs

Health & Safety While Abroad

- \$500,000 embedded medical insurance including evacuation insurance
- 100% mental wellness coverage with no restrictions on pre-existing conditions
- 24/7 emergency support while traveling:
 - › Local emergency team in all our destinations abroad
 - › Domestic support to coordinate with your university team back home
- Exclusive access to George Washington University emergency doctors

Financial Protection

- No cancellation penalties until 75 days before travel, giving you time to recruit*
- No program payment until 45 days before travel for university expenses*
- \$50 million liability insurance policy, with University of Nevada Las Vegas listed as an additionally insured
- WorldStrides assumes all foreign currency risk—your price is not subject to change due to currency rate fluctuations

**Except for any special non-refundable components or vendor & airline specific terms approved by University of Nevada Las Vegas.*

Higher Education Travel Protection Plan**

- We offer a great Higher Education Travel Protection Plan to help protect your educational travel investment
- If the plan is selected, it includes a CFAR waiver/benefit that allows participants to cancel up to 3 days before departure
 - › Recover up to 75% of non-refundable fees
 - › Non-refundable airfare costs can be recovered if arranged by WorldStrides
 - › Option to rescind your travel protection plan 5 days from the time of purchase and be reimbursed
- Other benefits included within this plan include trip interruption, travel delay, medical expense/emergency assistance, baggage & personal effects, and a pre-existing conditions waiver

***Terms and conditions apply—ask your WorldStrides representative for policy details.*



WorldStrides covers us with their insurance and simply brings it all together. On the very rare occasions when we've had some issues or hospitalizations, WorldStrides handled it perfectly.

Robert Nixon
University of Louisville



The crisis management team that WorldStrides has in place is top notch and staff are well trained to handle the variety of situations that can (and do) take place on study abroad programs.

Paula Memmer
Purdue University



When a student had a health emergency in China, the WorldStrides team mobilized to get the student's father from his home in the Midwest to Beijing. This included obtaining an expedited visa at the Chinese consulate (no easy task!). In less than 17 hours, the team took on and accomplished what most of us expected would be impossible.

Terri Barr
Miami of Ohio University



WHERE YOU'RE STAYING

Whether you choose to stay in a hotel, hostel, or homestay, our team has you covered! As the largest educational travel provider, we have relationships and connections to find the right accommodations to fit your needs.

- **14 nights** in double-occupancy rooms at 3-star hotel properties carefully selected by WorldStrides:
 - › **Madrid:** 5 nights – 3* Hotel
 - › **Valencia:** 4 nights – 3* Hotel
 - › **Barcelona:** 5 nights – 3* Hotel
- **Always Included:** Daily breakfasts at your accommodations, wireless internet, taxes & service charges, and any applicable meal gratuities.

ON THE GROUND

With a growing network of team members around the world, you can rest assured that we’re always nearby. Our vetted vendors and trusted ground teams mean you can focus on what really matters – your students. We are passionate about program design, so please rest assured that your proposed itinerary is completely custom and can be modified upon your request.



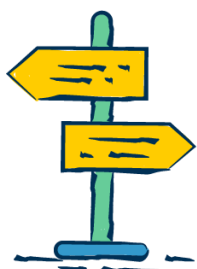
Transportation

- Coach transportation in safe, clean vehicles with experienced drivers:
 - › As listed within your itinerary, unless otherwise noted as walking or public transit
- One airport transfer at the most common time (in Madrid) and one departure transfer, at the most common time (in Barcelona)
- Madrid Public Transit Pass (Valid 5 days)
- Valencia Public Transit Pass (10 one-way trips)
- Barcelona Public Transit Pass (Valid 7 days)
- Intra-program train transportation from Madrid to Valencia (quote only—subject to change)



Support Team

- Local staff to provide an orientation meeting upon arrival
- English-speaking, trained, & professional local tour guides
- Gratuities for guides and drivers
- Tips to waitstaff for all included meals



Immersion & Extras

- As detailed within your itinerary:
 - › Group meals
 - › Cultural activities & immersions
 - › Classroom space, per itinerary, including projector, screen, and A/V equipment
- One non-alcoholic beverage at all included meals
- All applicable entrance fees for cultural sites, unless otherwise noted

VISA & ENTRY REQUIREMENT SUPPORT

The WorldStrides Visa team is dedicated to assisting faculty, staff, and students with visa procedures and requests and have processed over 6,000 visas for over 13 different international destinations in the last 5 years.

- Visas are not required for U.S. citizens traveling to Spain; however, a European Travel Information and Authorization System (ETIAS) will be required for U.S. Citizens in the future.
- **The fee for ETIAS processing is not included in your package price.**
- The ETIAS regulation will become effective in 2025.
- The WorldStrides visa team continues to monitor this new requirement and will provide more details as they become available. **Please refer to registration materials closer to departure to be sure that visa issues are addressed prior to travel.**
- **Entry Requirement Support – Always Included:** Our team of in-house visa experts work behind-the-scenes to ensure your students are prepared by providing the following for every program:
 - › Nationality review and assessment of any visa needs for all participants
 - › Personalized toolkit for each participant with U.S. residency
 - › Supporting documents that may be required for visa applications for any services arranged by WorldStrides

Your program investment details

Proposal Delivery Date: 10/7/2024

Proposal Pricing Expiration Date: October 12,2024

GROUND PACKAGE

- **\$4,386.60** per student– Based on a minimum of 10-14 full paying participants
- **\$3,828.73** per student– Based on a minimum of 15-19 full paying participants

Includes components detailed throughout your customized itinerary & proposal, such as the following:

- WorldStrides’ comprehensive risk management and insurance
- Accommodations, meals, transportation, guides, & cultural immersions

University Of Nevada - Las Vegas Spain - May 2025	
	10 FPPs & 2 Frees
Twin Occupancy Accommodations	\$1,860
<i>Optional Single Supplement</i>	<i>\$1,474</i>
Ground Services	\$818
Cultural Activities	\$365
Group Meals	\$155
Academic Expenses and Business Visits	\$0
Included Leader(s') Expenses	\$997
Management fee Inclusive of a dedicated account manager and curriculum coordinator, a student registration portal, payment collection, pre-departure documents, and world class risk management/insurance	\$350
Total Ground Only Package Price (per person)	\$4,545
Additional 2 airport transfers	+53.60
Removing 2 nights of accommodation	-212
NEW Total Ground Only Package Price (per person)	\$4,386.60

PROGRAM LEADERS

- **We've got you covered!** Costs for **2** program leaders are included in the ground package above, inclusive of:
 - › Ground & academics package, and single occupancy accommodations throughout the program

WHAT'S NOT INCLUDED?

- Single occupancy throughout the program for students (**\$1,474** per single room, if required)
 - › Forced singles for students – uneven room pairing due to gender imbalance
- Any optional items listed above
- Additional hotel or classroom meeting space not specifically noted in the proposal
- Any applicable processing fees for participants that may require a visa
- International airfare
- Meals, activities, or transportation arranged on own—any daily inclusions not listed within your itinerary

*Please note, due to the uncertainty of the ongoing pandemic, your program may be subject to additional expenses to meet new required government policies and procedures. WorldStrides will make best efforts to communicate new rules and policies as soon as we learn in order to share the impact on your program.

A Note about Confidentiality. This proposal contains proprietary work product of WorldStrides and is presented in good faith. The recipient(s) agree(s) to protect the confidentiality of this proposal subject to any state laws that require certain information to be made publicly available if requested. The proposal should not be sent to a third party without informing WorldStrides and gaining consent.

We're here for you

Recruitment resources you can put to work

Promoting a program can sometimes feel overwhelming, so we've created resources to help guide you through your registration and recruitment efforts:

- You'll have access to an online recruitment toolkit with email and flyer templates, as well as social media resources like photo sites & destination videos
- Upon request, our team can create a dedicated website to help promote your program to students, as well as offer support for upcoming campus events & fairs
- Use our online registration portal to manage student registration, payments, collection of dietary & health information, and roommate selection



Scholarships & financial support provided by WorldStrides

As part of our commitment to Generation Study Abroad and making global study abroad experiences accessible, WorldStrides has pledged to expand our scholarships program, and to date, have given away more than \$5 million.

- **Student Scholarship Opportunities:** [Learn more](#) about each of these \$3,000 opportunities available to student travelers participating on a WorldStrides faculty-led program.
 - › **Higher Ed Traveler Scholarship** – We understand the value of global travel and the positive impact it can have on a student's future success, so we created this merit-based scholarship program in 2017 to allow more students the opportunity to make education abroad a reality.
 - › **Diversity & Inclusion Scholarship** – This scholarship is intended for students with identities underrepresented in education abroad, as we believe in extending the opportunity to learn through experience to all students.
 - › **Natalie Shea Memorial Scholarship** – Natalie Shea was a beloved colleague at WorldStrides, and after her passing in the Fall 2020, we wanted to celebrate her enthusiasm for travel by offering a scholarship in her name. Through Natalie's legacy, we hope to inspire deserving students to explore the world through a new lens for years to come.
- **International Financial Assistance (IFA):** WorldStrides makes over \$2 million in funding available each year for students demonstrating financial need. [Learn more.](#)



A dedicated team working for you

Our internal team of travel experts becomes an extension of your university team, working with you on everything from program logistics to airfare and visas.

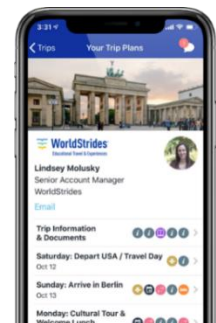
- **Program Development Team:** Partners with you on program design through the roster recruitment process to meet course objectives & achieve learning outcomes
- **Account Manager:** Your primary point-of-contact following recruitment, managing all of the day-to-day planning, operations, and logistics
- **Global Experiences Team:** Solely focused on developing academic content to align with your learning objectives
- **In-house Visa & Flights Teams:** Assists you and your students with all your travel needs



Your program at your fingertips

You and your students will have access to a customized mobile and online itinerary platform that encompasses all your program and itinerary details and can be downloaded for offline access while traveling! The WorldStrides App includes:

- Day-to-day itinerary & logistics customized to each individual traveler
- Academic briefings, pre-departure information, and important program documents
- Emergency contact information with touch-to-dial capabilities
- Risk management protocols & safe travel recommendations
- Group chat feature to communicate with your students
- Compatible mapping feature with Google or Apple Maps for all your itinerary locations



A partner with sustainability in mind

At WorldStrides, we believe in a shared duty to be socially, environmentally, and ethically responsible. Our commitment to environmental sustainability includes reducing waste in the office and on programs. Here are just a few examples of how we're doing this on higher education programs today. To learn more about our responsible business practices across the entire WorldStrides organization, [click here](#).

Choose Earth

As environmental and social responsibility are part of WorldStrides' core values, our Choose Earth initiative incorporates these practices into the ethos and outcomes of education abroad. The Choose Earth Certificate program is designed to give students a concrete way to participate in our organization's "Choose Earth" goals, as well as give them the necessary tools to then reflect on their engagement and impact.

When it comes to sustainability and environmentally responsible living, individual actions can have a significant global impact. The Choose Earth Certificate recognizes students' efforts to support a sustainable lifestyle and can be used to show future employers who also prioritize these values. Students who successfully complete the program will be issued a digital credential or badge to display on their LinkedIn profile.

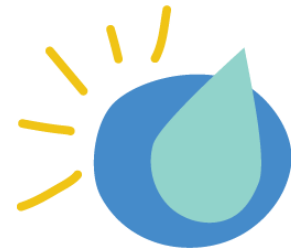


Fill it Forward

We have partnered with Fill it Forward, a company that provides fun and innovative ways to inspire all to show their love for their planet through interactive technologies, global giving initiatives, and reusable products that inspire the world to reuse.

Program participants will receive a sticker they can attach to their favorite reusable water bottle. Each time they refill their bottle and scan our custom WorldStrides QR code, one of the clean water projects being featured in the app will receive a donation. Each scan = 0.02 cents towards the clean water project being featured in the app.

Within the app, students can track their water consumption, waste diverted, emissions saved, and how much ocean pollution they have prevented.



Carbon Footprint Offset

We've partnered with the Carbonfund.org Foundation to give our students the option to offset their carbon footprint associated with their flights and travel during their program.

Using an emissions calculator, the CO₂ output associated with each program has been calculated, along with the cost to offset those emissions. When a partner opts into this program, students will be given the opportunity within our online registration system to add the offset cost to their purchase.

WorldStrides will forward all funds collected to Carbonfund.org to help neutralize CO₂ emissions through internationally certified reduction programs. These programs include alternative green energy projects and reforestation initiatives. The accredited nature of these programs assures that these funds are used directly for an offset.



Agreement Terms & Conditions for University of Nevada Las Vegas

Spain
May 2025



Program terms & conditions

PARTICIPANT ADD-ONS (NOT INCLUDED)

- **\$1,474** per participant – Single occupancy upgrade throughout the program
- **\$265** per group- Private group transfer from Madrid airport to hotel for arrival

PROGRAM COMPONENTS

Academic Support

- Please note certain academic engagements could have additional expenses such as company entrance fees, equipment costs, translators, additional meeting space, or coach mileage for visits outside city limits. Any additional costs will be communicated to University of Nevada Las Vegas in writing.
- For travel programs with signed agreements received 90 days or less from departure, please note that final confirmations may not be provided until the week of travel. Due to the abbreviated planning timeline, we are unable to accept requests for substitution of confirmed meetings in these instances.
- WorldStrides Custom Programs considers proprietary the names and contact information for professionals who partner with us to provide academic engagements. Contacts originated and cultivated by WorldStrides may not be solicited by the university for similar purposes for future travel programs for a period of at least two years. Likewise, WorldStrides will extend the same courtesy to the professional contacts involved in business meetings originated by your university team.

Coach & Guide Inclusions

- Coach and guide services as listed within your itinerary are based on the following, unless otherwise noted:
 - › Full day = 8 hours
 - › Half day = 4 hours
- Coach and guide services are included in your program price based on the included itinerary. If there are modifications to your itinerary and coach service is required outside city limits or guide service is extended, additional costs may be incurred for additional time, mileage, and fuel.
- If public transportation was elected to be used on business visit days, additional costs may be incurred if business visits confirmed are not easily accessible via public transportation and coach service needs to be arranged.

Accommodations

- Upon written confirmation from University of Nevada Las Vegas or an executed agreement, accommodations will be secured for the program by WorldStrides. If the represented property is not available, a comparable property may be substituted with advanced notice.

Visa Services

- Please note that visa fees, regulations, and entry requirements are subject to change due to circumstances outside of WorldStrides' control.
- Visa requirements may be different for participants of different nationalities and are also subject to change.

APPLICATION PACING & ROSTER UPDATES

To ensure that WorldStrides delivers and executes the best program possible, it's critical that we understand the university's student application and registration deadlines during the program planning and design phases.

Standard Application Pacing & Roster Schedule	
1	<p>Application pacing update due</p> <p>February 7, 2025 100 days prior to departure <i>University agrees to provide an initial roster or an update on student application pacing to WorldStrides</i></p>
2	<p>Final roster due</p> <p>February 18, 2025 90 days prior to departure <i>University agrees to send a final roster to WorldStrides of traveling participants meeting the minimum number of full-paying participants</i></p>

PAYMENT DEADLINES

- If non-refundable deposits are due to confirm any services, WorldStrides will invoice the university upon written approval from University of Nevada Las Vegas (net 30 days).
 - › University agrees to make best efforts to make timely payments for non-refundable cost obligations.
- The following payment schedule and associated terms and fees apply to WorldStrides programs:
 - › Any modifications to this payment schedule must be by mutual agreement and confirmed on the [Program and pricing conditions](#) section of this agreement or in writing via email.
 - › Payment as agreed upon by both parties must be received prior to the group's departure.
 - › All participants must be fully paid prior to travel unless alternative arrangements have been agreed upon.

Student Pay Standard Payment Schedule		
1	Deposit(s) payment	Due upon registration with WorldStrides Custom Programs <i>Refundable up until 75 days prior to departure</i>
	<ul style="list-style-type: none"> ■ Ground deposit 	15% of ground package per person
	<ul style="list-style-type: none"> ■ Group air (if applicable) 	\$200 per person
2	Second payment deadline	February 18, 2025 90 days prior to departure <i>50% of the total remaining program price</i>
3	Final payment deadline	April 4, 2025 45 days prior to departure <i>100% of the total remaining program price</i>

ENTIRE PROGRAM CANCELLATIONS

- University of Nevada Las Vegas understands and acknowledges that the services and value WorldStrides provides begins long before your program’s departure, and there are significant unrecoverable costs as your departure date approaches.
- WorldStrides’ overhead and program management services are not refundable in the event of any cancellations received (entire program or individual) within 76 days of your program’s departure date.
- Please review both the entire program and individual cancellation clauses in the University Terms & Conditions.
- The following chart outlines the University of Nevada Las Vegas’s financial liability by deadline should the University cancel the program:

Standard Cancellation Deadlines		
1	March 5, 2025	75 days prior to departure <i>15% of ground services portion of program fee becomes non-refundable, plus any additional non-refundable costs previously committed to by the University in writing</i>
2	March 20, 2025	60 days prior to departure <i>50% of ground services portion of program fee and any airfare penalties (if applicable) become non-refundable, plus any additional non-refundable costs previously committed to by the University in writing</i>
3	April 18, 2025	30 days prior to departure <i>100% of ground services and airfare costs (if applicable) become non-refundable, plus any additional non-refundable costs previously committed to by the University in writing</i>

PROGRAM AND PRICING CONDITIONS

- 1) If the actual number of full paying participants falls below the figure(s) stated above, WorldStrides reserves the right to re-price the program.
- 2) Your program price is based in U.S. Dollars (USD) and is not subject to change due to currency rate fluctuations. WorldStrides assumes all foreign currency risk.
- 3) Your Ground & Academics package price includes all current local government taxes, where applicable for all included services.
- 4) In case of any conflicting terms between WorldStrides’ Terms and Conditions and the executed version of the client agreement, the terms of the client agreement shall control.
- 5) WorldStrides reserves the right to apply the more restrictive cancellation terms between WorldStrides’ cancellation terms and the third-party supplier.
 - a) WorldStrides will communicate any cancellation or payment terms stricter than WorldStrides’ standard Terms and Conditions within this Agreement or to University of Nevada Las Vegas in writing. University must approve of these modified terms before these service components can be confirmed by WorldStrides.

University terms & conditions

- 1) **Price:** The price quoted is based on the minimum number of full-paying participants agreed to in the University Contract and the inclusions listed therein. Quoted prices are subject to adjustment if this minimum is not met, if new inclusions are added, or in the event of circumstances beyond WorldStrides' direct control. These include, but are not limited to, airline, vendor, or group-imposed schedule changes or delays as well as fuel surcharges or local country taxes and fee adjustments. WorldStrides will communicate in writing any known charges to the program leaders. Authorized University representative(s) will determine if the University or individual participants will be responsible for these additional charges.
 - a) **International & Domestic Air:** Quoted airline prices are inclusive of all airfare taxes, fees, fuel, security and other surcharges imposed by the carrier as of the date prices are quoted but are subject to increase if additional charges are assessed by the airline prior to ticketing. A minimum of 10 people is required for group airfare. If less than 10 participants elect the group fare, the fare returns to the full published rate and University or traveling participants are responsible for the difference between the quoted group fare and the individual published fare.
- 2) **Additional Services:** Participants may have the option to purchase additional services for their program such as pre and post program hotel nights, airport transfers, appointment tickets as well as other items. Participants are required to pay in full for all additional items selected through the online portal. Additional services purchased are subject to Standard Fees. Participants must be fully paid in order to travel. No refunds will be provided for additional services cancelled within 30 days of departure. Participant(s) purchasing an optional travel protection plan should refer to the terms of the policy.
- 3) **International & Domestic Airfare Associated Penalties for Individual or Entire Program Cancellations:**
 - a) **Air Deposit:** Once the airline utilization deadline has passed (approximately 100 days prior to departure), there is a \$200 per seat cancellation penalty.
 - b) **Cancellation of airfare once tickets are issued:** Once any airfare tickets are processed and ticketed (approximately 45 to 60 days prior to departure), the entire amount of the ticket becomes fully non-refundable. Subject to airline terms and conditions, University or cancelling participant(s) may receive a voucher to be utilized on future flight reservation(s).
- 4) **Entire Program Cancellations & Associated Penalties:** All cancellations must be sent in writing via to your assigned WorldStrides Account Manager. Cancellations are effective on the date they are received by WorldStrides.
 - a) **Cancellations received 61 to 75 days prior to departure:** University or registered participants will incur a penalty of 15% of the ground services portion of the program fee, as well as any additional non-refundable fees previously committed to by the University in writing prior to the program cancellation. University or registered participants are responsible for any and all airfare penalties for flight(s).
 - b) **Cancellations received 31 to 60 days prior to departure:** University or registered participants are eligible for a partial refund in the amount of 50% of the ground services portion of the program fee less any additional non-refundable fees previously committed to by the University in writing prior to the program cancellation. The refund may be based on a combination of cash and/or credit(s) for a future program with WorldStrides traveling within 12 months from the original program dates.
 - c) **Cancellations received within 31 days of departure:** To the extent that future credits are issued by WorldStrides' suppliers or airlines, the University or registered participants may be eligible for a credit or credits to be utilized on a future program with WorldStrides traveling within 12 months from the original program dates. University understands that an entire program cancellation inside of 31 days from departure will not be eligible for a cash refund.
- 5) **Individual Cancellations & Associated Penalties:** All cancellations must be sent in writing via email to your assigned WorldStrides Account Manager. Cancellations are effective on the date they are received by WorldStrides and may take up to 30 days to be processed.
 - a) **Cancellations received 61 to 75 days prior to departure:** For any cancellations received between 61 and 75 days prior to travel, WorldStrides will retain 15% of the ground services portion of the program fee, as well as any additional non-refundable fees previously committed to by the University in writing prior to cancellation. University or cancelling participant(s) are responsible for any and all airfare penalties for flights.
 - b) **Cancellations received 31 to 60 days prior to departure:** For any cancellations received between 31 and 60 days prior to travel, WorldStrides will retain 50% of the ground services portion of the program fee as well as any additional non-refundable fees previously committed to by the university in writing prior to cancellation. University or cancelling participant(s) are responsible for any and all airfare penalties for flights.
 - c) **Cancellations within 31 days of departure:** Cancellations received within 31 days of departure are subject to a cancellation fee equal to 100% of both the ground services and international air. Subject to airline terms and conditions, University or cancelling participant(s) may receive a voucher to be utilized on future flight reservation(s).
- 6) **Health & Insurance:** Participants with special medical or physical requirements should investigate destination(s) beforehand and ensure the care and conditions they need will be available. For further information regarding travel to specific destination(s), please visit the Centers for Disease Control and Prevention's Travelers' Health website (<https://www.cdc.gov/travel/>). Once registration is confirmed, any physical or mental condition requiring special medical attention or equipment must be disclosed in writing to WorldStrides as soon as the condition is known. WorldStrides will make efforts to meet special needs but may alter itineraries accordingly. In compliance with WorldStrides' safety and security standards, all participants are covered by insurance underwritten by an independent insurer with benefits including but not limited to medical, dental, mental health, and emergency medical and security evacuation coverage. Covered expenses resulting from an on-tour incident must be incurred on tour. Any charges not covered will be the responsibility of the participant. In the rare event of a major medical issue, evacuation, or other serious situation, the University and/or participant may be responsible for additional fees related to staff time and risk management resources, and vendor support, if activated.
- 7) **Registration, Privacy, and Information Retention:** WorldStrides risk management procedures and liability insurance providers require that we collect certain information from all participants. As a result, we require all traveling participants to register online via our secure online registration platform. Because the nature of our business requires coordination with various partners and suppliers who assist us to deliver the travel services requested, it is necessary to share certain personal information collected from our online registration system. WorldStrides assumes no responsibility or liability for unregistered participants and prohibits their participation in the program. WorldStrides uses commercially reasonable physical, technical, and administrative safeguards to assist us in preventing unauthorized access, use and disclosure of sensitive information. Furthermore,

WorldStrides Terms & Conditions Continued

WorldStrides uses industry best-practices for the secure and reasonable retention of information and records and information. In the event that WorldStrides believes an unauthorized party has obtained access to any protected records, WorldStrides will notify authorized University representative(s) immediately.

- a) **Important Notice:** By registering for this program, participants are agreeing to participate in a full-service group educational travel experience. Because of the unique nature of group travel, many elements of the program and itinerary may be selected and/or scheduled at the direction of the University's authorized representative(s). Further, please note that, while WorldStrides and its affiliates will arrange the various travel components for your program, the total price quoted for this program includes additional pre-program services, including but not limited to the planning and development costs of the program's itinerary, the coordination and reservation costs to secure and manage vendor contracts for selected program components, the costs associated with our various program safety and security measures, and the administrative and service costs related to more than six months of program management.
- 8) **Visa(s) & Passport:** Visa(s) are required for U.S. citizens and citizens of most other countries for certain WorldStrides program destinations. Please refer to registration materials to be sure that visa issues are addressed prior to travel. While WorldStrides may assist in the visa(s) procurement process, the attainment of a visa(s), including transit visas, is ultimately the responsibility of the participant. Inability to travel due to a lack of proper travel documents (Passports & Visas) does not constitute grounds for a refund. WorldStrides' quoted visa processing price is subject to adjustment. Visa documents submitted after the processing deadline may result in late fees. Late fees or consular fee changes are the responsibility of the participant.
- 9) **Changes to Program:** WorldStrides reserves the right to make additions or deletions in the program deemed advisable for the well-being of the group or changes in circumstances. WorldStrides will work with key decision makers at the University regarding additions or deletions to the program that are directly related to the well-being of the group or changes in circumstances. WorldStrides will notify the authorized University representative(s) of any proposed changes or alterations to the program before confirming. Reservations are not transferable.
- 10) **Individual or Group Non-Program Reservations:** WorldStrides assumes no responsibility for reservations, travel, or program excursions that are not booked directly through WorldStrides. Further, WorldStrides' insurance programs will not extend to or cover any program element that is not booked directly through WorldStrides.
- 11) **Individual Flight or Group Flight Deviation:** Participants may wish to spend time at their destination(s) before/after the scheduled tour. Where possible, WorldStrides will provide alternative flight arrangements according to individual requests. Those participants, who have requested individual flight itineraries, are responsible for making their own arrangements to and from the hotel or airport, as well as all land arrangements pertaining to the individual itinerary. Since WorldStrides will arrange these individual flights outside of the group itinerary, WorldStrides cannot guarantee that participants will share any of the same flights. WorldStrides charges a \$150 non-refundable fee for this service plus any additional costs incurred due to airline fare differences. This option is not available if a group has fewer than 12 traveling participants. All requests must be made within two weeks of registration and no later than 100 days prior to departure, whichever occurs first. Other airline-imposed restrictions may apply.
- 12) **Responsibility:** All program participants will be responsible for their own actions at all times. WorldStrides assumes no responsibility for participants when they are on their own "free time." The University understands that traveling program participants are solely responsible for the pre-program, program, and post-program medical care in all respects, including, but not limited to, obtaining and taking necessary medication(s), vaccinations and any other medical care and treatment. Furthermore, the University understands that it is the participants' responsibility to understand the risks associated while traveling, including, but not limited to, understanding hotel fire safety and emergency evacuation plans at each location. Additional information can be found at the State Department's International Travel website (<https://travel.state.gov/>).
- 13) **Behavior:** While participating on the WorldStrides program, participants are ambassadors of the U.S., their home university, and WorldStrides, and participants will behave in a manner that is respectful of the host culture, its people, and laws at all times. While on the program, participants remain bound by the home university's academic and behavioral rules, including any student code of conduct, and participants can be expelled from the program if he/she breaches such rules. WorldStrides and the University will collaborate to make a timely and joint decision regarding any participant(s) expulsion from the program. Any and all costs associated with disrespectful behavior, including damage, will be the responsibility of the participant. In the event a participant is expelled from the program, no refund of any kind will be made, and expelled participant is responsible for all costs to return home. The University is responsible for informing all program participants of this behavior standard.
- 14) **Force Majeure:** WorldStrides assumes no responsibility for events beyond its reasonable control, including, but not limited to, acts of God, war (whether declared or not), terrorist or criminal activities, strikes, civil unrest, government restrictions, lost or stolen belongings, overbooking of accommodations, mechanical failure of or delays with transportation, illness, dangers associated with animals, sanitation problems, food poisoning, lack of or quality of medical care, or actual, perceived, or threatened epidemics. WorldStrides shall not be responsible for personal or bodily injury, loss, or damage from any event caused by persons or companies not directly or indirectly controlled by WorldStrides, including without limitation air carriers, bus companies, railways, hotels, subcontracted agents, or tour operators, except to the extent of WorldStrides' negligence or willful misconduct in selecting and contracting with such persons or companies.
- 15) **Indemnity:** To the fullest extent permitted by law, WorldStrides will indemnify, participate in the defense of, and hold harmless the University, and its agents and employees, against any claims, damages, losses and expenses, arising out of or resulting from the provision of travel-related services pursuant to the contracted program, provided that any such claim, damage, loss or expense is attributable to bodily injury, sickness, disease or death, or to injury to or destruction of tangible property, but only to the extent caused by the negligent acts or omissions of WorldStrides, or anyone directly employed by WorldStrides. This indemnification is specifically limited by the exclusions in Paragraph 12 above. Furthermore, this indemnification will not apply to claims, damages, losses or expenses caused in any part by the University. WorldStrides will name the University as an additional insured under its applicable liability policy for the duration of events and travel booked directly through WorldStrides.

Program agreement confirmation

A signed agreement is due prior to **February 18, 2025**, so that WorldStrides can execute contracts for program components. If an executed agreement is not received in a timely manner, some components requested may no longer be available and could cause the program price to increase.

By signing below, I accept this agreement for services, acknowledge the Terms & Conditions, and authorize WorldStrides to begin operations for the proposed travel program. After signing, email one copy of this agreement to you WorldStrides Team at your earliest convenience and we will begin operating the program with this authorization.

WorldStrides Custom Programs Representative

University of Nevada Las Vegas Representative

Matt Smith
Associate VP, Higher Education

10/7/2024
 Date

 Date